

No. 61
October 2007



Find us on the web:
www.sawma.org.au



Wound Wisdom

Newsletter of the
South Australian Wound Management Association Inc.
Box 71 Rundle Mall, Adelaide, SA 5000
Telephone pager: 08 8378 8884

Education Meeting Wednesday 21 November 2007

Wound Lab²

Continuing the focus on fundamental skills:

- Learn about wound debridement techniques
- Update on dressing procedure techniques
- Explore wound cleansing methods

Trade display & supper 1845

Education meeting commences 1930

All Welcome

Non members \$5.00 Members & students free

SAWMA is a multidisciplinary association and is non-partisan in its approach to wound products

Christmas meeting

The November Education Evening will be the Christmas celebration for SAWMA



Join us for supper, a Christmas drink, raffles and fun!

Advance notice re: 2008

SAWMA is exploring alternative venues for our education nights in 2008. More information to come

Education night venue: Enterprise House

136 Greenhill Road, Unley (Undercover parking on site)
30m west of Unley Road. Enter off Greenhill Road between Unley Road and Salisbury Street.

President's report

We are fast approaching the final education night for 2007. Our August education meeting was very well attended. It was clearly evident a review of fundamentals in wound management, was a desired topic. Building on from August, SAWMA will continue this theme for our November education meeting. **“Wound Lab part 2” will focus on wound cleansing, dressing techniques and wound debridement. The evening will commence with a light supper, Christmas cheer and Trade display. We will also raffle three Christmas hampers, for lucky members to win.**

As I reflect on 2007 it has been another exciting year for SAWMA. We continue to offer members many resources and opportunities. In particular, our web site has continued to develop and expand. The web site includes past newsletters, education evening presentations, links, book reviews, conference information and other valuable resources. I encourage you to visit it regularly. Our education evenings continue to attract good numbers of members and non-members, eager to keep up with the latest developments. The SAWMA conference was a success with many varied speakers and valuable opportunities for learning and networking.

Looking ahead to 2008, we are aiming to have a pressure ulcer prevention and management theme at our AGM in February. Our education nights are for the members so SAWMA welcomes your ideas and we encourage you to submit these via our website at www.sawma.org.au or speak to any committee member. Also a reminder that SAWMA offers its members a research grant of up to \$5000.00. For further information, visit our website.

Thank you to all SAWMA members for your continuing support of the Association. We applaud your continuing commitment and enthusiasm to learning in order to provide the best possible wound management to your patients. Sincere thanks go to the many speakers who have freely donated their time, expertise and willingness to share their knowledge with others. Thank you to the Trade for their wonderful support of our conference and education meetings throughout the year. SAWMA is appreciative of your enthusiasm and sponsorship. Finally, I also would like to thank the Committee members for their hard work, creativity and giving of their personal time, to support the Association. Every member is valued for their unique contribution.

I wish you all a safe and Merry Christmas.

SAWMA looks forward to seeing you at our future educational events.

With Kind Regards,



Margi Moncrieff
SAWMA President

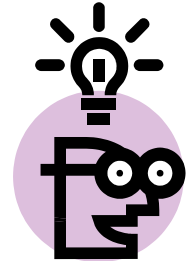
Wound education programs in SA

RDNS

Five day internal Wound Management Course. Can be completed as a certificate or 3 unit credit option within the School of Nursing, Flinders University of South Australia.

RDNS also offers individualised education programs, sessions and workshops to suit your organisation.

Contact the RDNS Education Centre. Ph: 8208 5300 and ask for the Education Centre.



ABPI Workshop

The RDNS Education Centre is offering a workshop where you can learn how to perform Ankle Brachial Pressure Index measurement using hand held Doppler ultrasound.

Date: Tuesday 13 November 2007 Time: 1.30 – 4.30pm

Venue: RDNS Education Centre, 44 Greenhill Road, Wayville

Cost: \$80

For further information: Ph (08) 8208 5300 Email education@rdns.org.au or

Web www.rdnseducation.edu.au

The symposium is of particular importance to nurses working in General Practice or other settings where ABPI measurement might be required.

Facilitator: Sue Templeton

Study day: Contemporary Issues in Wound Management

RDNS SA is holding a study day which will explore the latest developments in wound management. These study days are very informative and practical. Sessions are presented by well known and respected wound management practitioners.

Date: Friday 30 November 2007 Time: 9.00am – 4.30pm

Venue: RDNS Education Centre, 44 Greenhill Road, Wayville

Cost: \$165

Topics to be covered include:

- Topical negative pressure therapy (VAC)
- Compression workshop
- Advanced Wound Assessment
- Specialty dressings

For further information: Ph (08) 8208 5300 Email education@rdns.org.au or

Web www.rdnseducation.edu.au

Clinical Corner: ABPI measurement

Description

Measurement of the Ankle Brachial Pressure Index (ABPI) (often referred to as 'Doppler') is a simple, non-invasive test usually used in wound management to exclude clinically significant **arterial** disease prior to commencement of graduated compression therapy. It can also be useful to assess the presence and severity of arterial compromise in persons with other conditions, such as heel pressure ulcers.

To measure ABPI a Doppler ultrasound machine and a sphygmomanometer is required. Instead of listening for arterial flow with a stethoscope, the operator uses the Doppler ultrasound machine to listen for arterial flow. Compression is applied to the artery using the sphygmomanometer until arterial flow ceases. The sphygmomanometer cuff is deflated slowly and the pressure recorded when the first distinct sound is heard via the Doppler. Systolic arterial pressure is usually measured on both arms and both feet. The arteries on the feet used in ABPI measurement are the Dorsalis Pedis and the Posterior Tibial. The highest reading from the brachial arteries is compared with the highest reading from each foot to give a ratio – the ABPI.

ABPI is calculated by: $\frac{\text{Ankle pressure}}{\text{Brachial pressure}}$

Result	Interpretation
> 1.3	Incompressible vessels Results not useful Seek specialist advice
1.01 – 1.3	Possible partial non compressibility Correlate with clinical history
0.9 – 1.0	Normal peripheral arterial circulation
0.8 - 0.9	Possible slight deficit in arterial supply Correlate with clinical history
0.5 – 0.85	Moderate arterial disease Vascular review recommended
< 0.5	Significantly reduced arterial disease Urgent vascular review recommended



Generally high compression should only be applied with an ABPI 0.8-1.1

ABPI in the clinical setting

- Using a hand-held Doppler ultrasound, ABPI can be performed in hospital, residential facilities, the home, clinics and surgeries.
- Prior to performing ABPI measurement the practitioner should undergo a training program involving theoretical and practical elements.
- ABPI measurement should never be relied upon in isolation. ABPI forms only one component of a comprehensive, structured assessment.
- Certain conditions such as diabetes, renal disease and rheumatoid arthritis can result in arterial calcification and potentially falsely elevated readings.

Sue Templeton

PRIMARY INTENTION

THE AUSTRALIAN JOURNAL OF WOUND MANAGEMENT

Australia's leading Wound Management Journal



**INVOLVED IN
RESEARCH?**

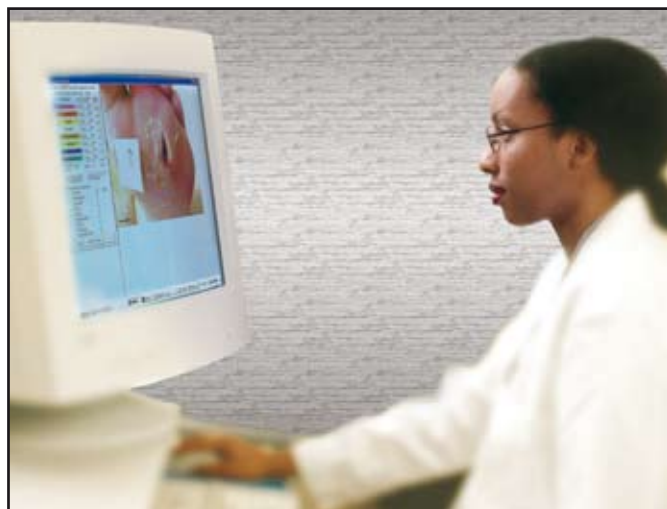
**CONTEMPLATING
WRITING A REVIEW
ARTICLE?**

**GOT SOMETHING
TO SAY?**

ARE YOU INTERESTED IN:

- Disseminating your message to over 2000 key wound management personnel throughout Australia and beyond?
- Increasing your professional profile and that of your organisation nationally & internationally?
- Gaining support in all phases of article development?

**Submit to Primary Intention and
achieve all this and more!**



Visit our website for more information:

www.awma.com.au

or contact: info@awma.com.au

Important Dates

2007: SASVN Education Meeting: October 31

www.sasvn.com.au

2008: June 4-8: 3rd World Union of Wound Healing

Societies Meeting, Toronto, Canada: www.wuwhs.org

2008: May 7-10: 7th National Conference of the Australian
Wound Management Association, Darwin, Australia

This newsletter aims to share information about contemporary issues in wound management. We welcome your contributions, resources, tips, case studies etc.

Submit contributions to the editor
Sue Templeton Ph 1300 364 264 or
editor@sawma.org.au

Web address
Visit us at:
www.sawma.org.au

SAWMA Committee Members

Office Bearers

Ms Margi Moncrieff	(President)	Ph (w) 8204 5311
Ms Sue Templeton	(Vice President)	(w) 1300 364 264
Ms Andrea Smallman	(Secretary)	(h) 0418 816 152
Ms Bec Daebeler	(Treasurer)	(w) 8201 4884
Mr Michael Arthur	(Membership Secretary)	8355 3500

General Committee Members

Ms Chris Bashford	Ph (w)	1300 363 262
Ms Lindsey Brooks		0437 771 605
Ms Veronica Dottore		8222 4413
Ms Beth McErlean		8226 4048
Ms Helen Pecanek		0419 845 619
Ms Maree Prendergast		1300 364 264
Ms Janet Vincent		0419 825 407

Committee members can be contacted by phone, via the mailing address or through a message left on the SAWMA pager 8378 8884

All expressions of opinion and all other statements in this newsletter and any attachments are published on the authority of the writer/s over whose signature they appear and are not to be regarded as expressing the views of the South Australian Wound Management Association. Where clinical information is provided readers are encouraged to verify this independently. Whilst every effort is made to ensure the accuracy of information, no responsibility is taken by SAWMA for any inaccuracies or omissions.